

Customizable features

Your vehicle includes a variety of electronic features that can be personalized to your preferences. Programming these preferences requires specialized equipment and may be performed by an authorized Toyota dealership.

Some function settings are changed simultaneously with other functions being customized. Contact your Toyota dealer for further details.

► Vehicles with TFT type multi-information display

Some function settings can be changed by operating the multi-information display.

Customizable features

Item	Function	Default setting	Customized setting
Wireless remote control (→P. 43)	Wireless remote control	ON	OFF
	Unlocking operation*	Driver's door unlocked in one step, all doors unlocked in two steps	All doors unlocked in one step
	Automatic door locking function (if a door is not opened after being unlocked)*	ON	OFF
	Time elapsed before automatic door lock function is activated if door is not opened after being unlocked*	60 seconds	30 seconds
	120 seconds		

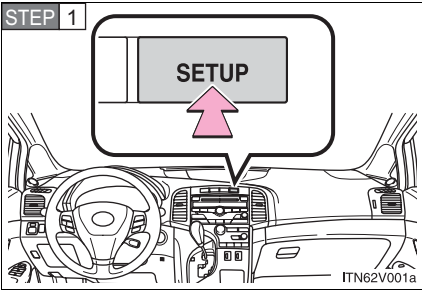
Item	Function	Default setting	Customized setting
Wireless remote control (→P. 43)	Operation signal (Emergency flashers)*	ON	OFF
	Operation signal (Buzzer)	ON	OFF
	Operation signal (Buzzer volume)	Level 7	Level 1 to 6
			OFF
	Open door warning function (when locking the vehicle)	ON	OFF
Panic function	ON	OFF	
Door lock (→P. 53)	Unlocking using a key	Driver's door unlocked in one step, all doors unlocked in two steps	All doors unlocked in one step
	Speed-detecting automatic door lock function*	OFF	ON
	Shifting the shift lever to position other than "P" locks all doors*	ON	OFF
	Shifting the shift lever to "P" unlocks all doors*	ON	OFF
	Opening driver's door unlocks all doors*	OFF	ON

Item	Function	Default setting	Customized setting
Smart key system (→P. 28)	Smart key system	ON	OFF
	Operation signal (Emergency flashers)	ON	OFF
	Operation signal (Buzzer)	ON	OFF
Automatic light control system (→P. 202)	Light sensor sensitivity	Level 3	Level 1 to 5
	Daytime running light system (U.S.A. only)	ON	OFF
	Automatic High Beam (if equipped)*	ON	OFF
	Time elapsed before headlights automatically turn off after doors are closed*	30 seconds	0 seconds
			60 seconds
90 seconds			
Alarm system (→P. 104)	Time elapsed before the alarm is set	14 seconds	30 seconds
Multi-information display (→P. 184)	Language selection*	English	French
			Spanish

Item	Function	Default setting	Customized setting
Illumination (→P. 384)	Time period before lights turn off*	15 seconds	7.5 seconds
			30 seconds
	Vehicles with smart key system: Operation after the “ENGINE START STOP” switch is turned off Vehicles without smart key system: Operation after the engine switch is turned to the “LOCK” position	ON	OFF
	Operation when the doors are unlocked	ON	OFF
	Operation when you approach the vehicle with the electronic key on your person (When the personal/interior light main switch is door position.) (vehicles with smart key system)	ON	OFF
Seat belt reminder (→P. 516)	Vehicle speed linked seat belt reminder buzzer	ON	OFF

*: For vehicles with TFT type multi-information display, the setting can be changed by operating the multi-information display. (→P. 594)

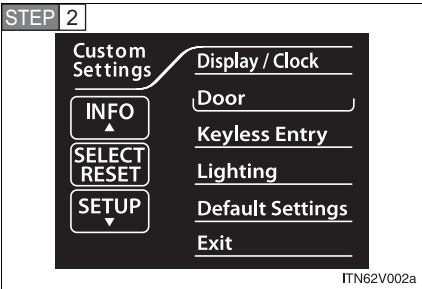
Customizing the features by using the multi-information display (vehicles with TFT type multi-information display)



Press the “SETUP” button while the vehicle is stopped.

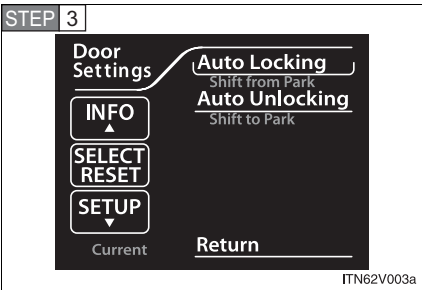
The “Custom Settings” screen is displayed on the multi-information display.

If left idle for approximately 10 seconds, the display will revert to the previous screen.



Select the setting you wish to change by pressing the “INFO” or “SETUP” button, and press the “SELECT RESET” button.

If you select “Exit” and press the “SELECT RESET” button, the display will revert to the previous screen.

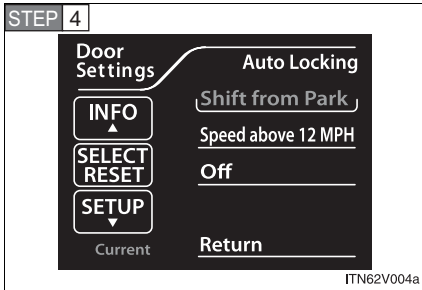


Select the setting you wish to change by pressing the “INFO” or “SETUP” button, and press the “SELECT RESET” button.

The illustration assumes that “Door” was chosen in **STEP 2**.

The current setting is indicated by yellow text.

If you select “Return” and press the “SELECT RESET” button, the display will revert to the “Custom Settings” screen.



Choose a desired setting by pressing the “INFO” or “SETUP” button, and press the “SELECT RESET” button.

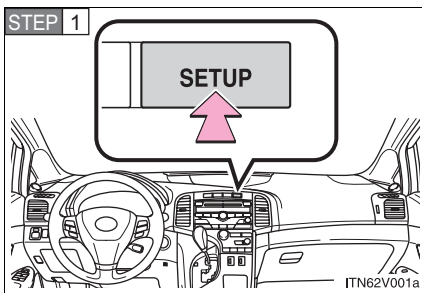
If any settings are changed, the display will revert to the previous screen.

The illustration assumes that “Auto Locking” was chosen in **STEP 3**.

The current setting is indicated by yellow text.

If you select “Return” and press the “SELECT RESET” button, the display will revert to the previous screen.

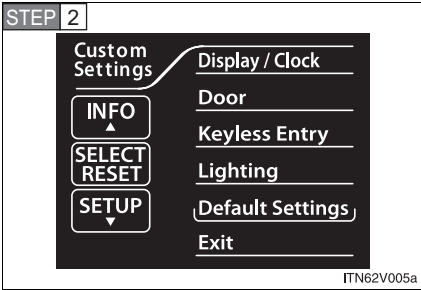
n Restoring default settings



Press the “SETUP” button while the vehicle is stopped.

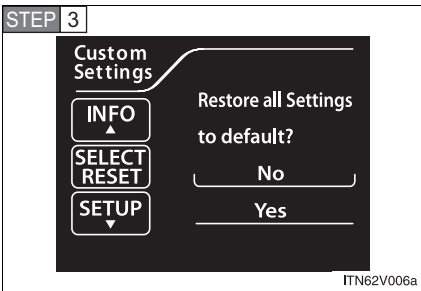
The “Custom Settings” screen is displayed on the multi-information display.

If left idle for approximately 10 seconds, the display will revert to the previous screen.



Select “Default Settings” by pressing the “INFO” or “SETUP” button, and press the “SELECT RESET” button.

If you select “Exit” and press the “SELECT RESET” button, the display will revert to the previous screen.



Select “Yes” by pressing the “INFO” or “SETUP” button, and press the “SELECT RESET” button.

“Default Settings Restored” is displayed, and the default settings are restored.

If you select “No” and press the “SELECT RESET” button, the display will revert to the “Custom Settings” screen without restoring the default settings.

■ If the vehicle is moved while settings are being changed on the multi-information display

→P. 196